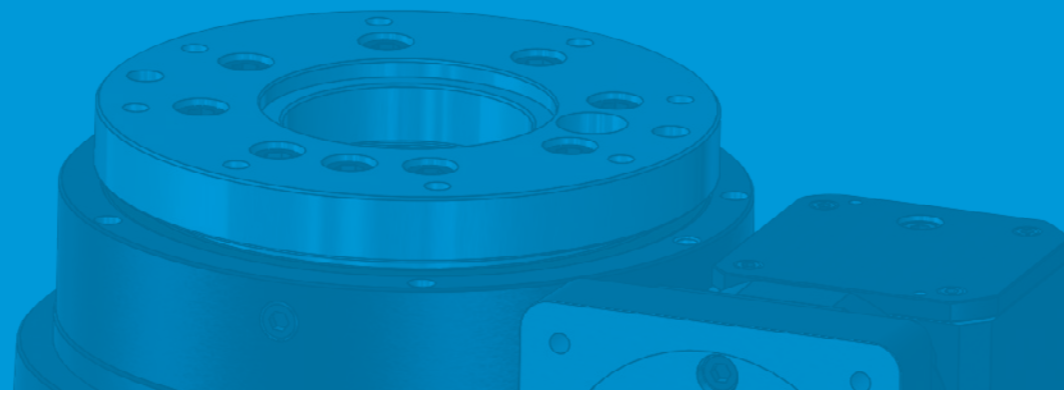




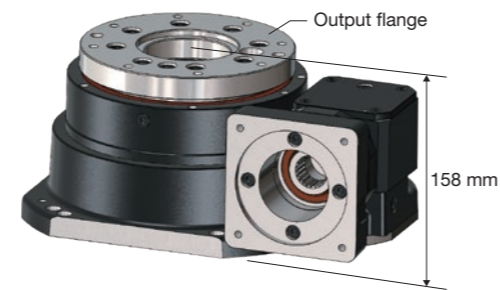
# RS-50A



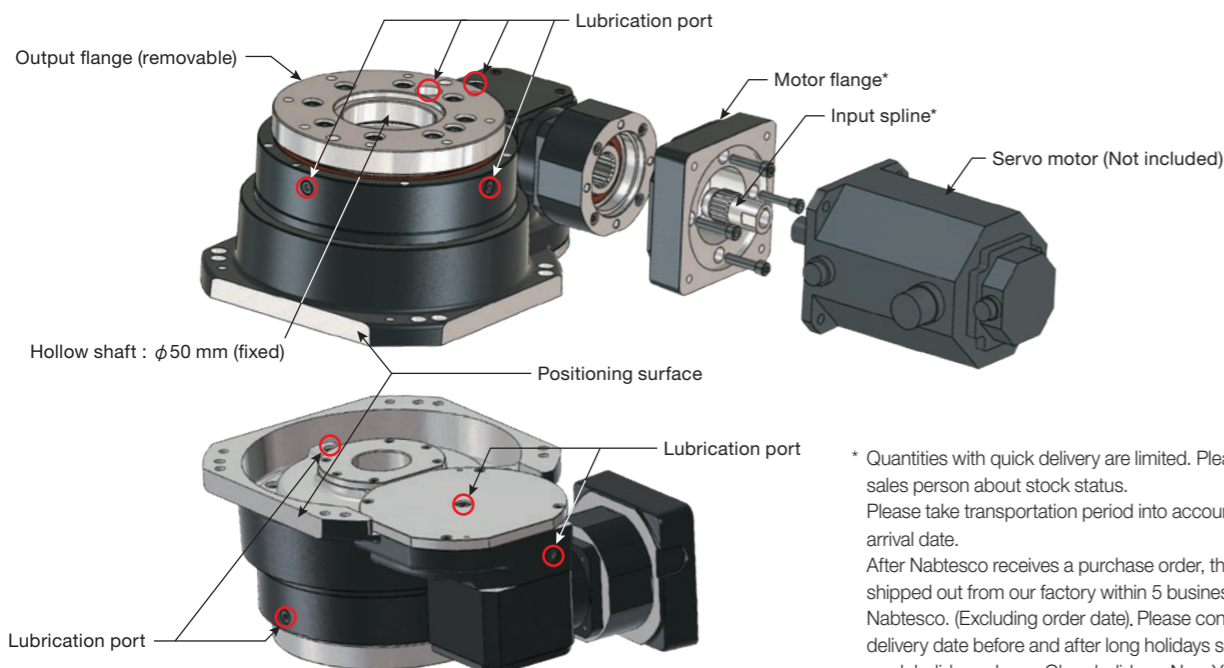
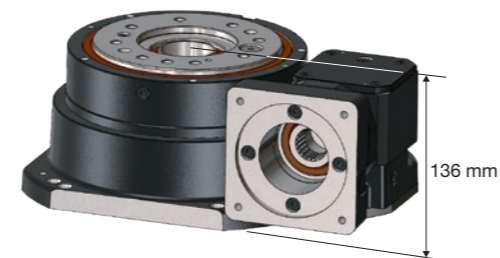
## Features

- **A gearhead utilizing the industrial robot industry-proven Precision Reduction Gear RV™**  
High accuracy, rigidity, and reliability
- **Shorten cycle times with high speed rotation**  
High speed indexing (180° in 0.7 sec, with 10 kgm<sup>2</sup> moment of inertia)
- **Compact size reduces total height of machine**  
Distance from base to output flange : 136 mm
- **Hollow shaft for wiring**  
φ50mm hollow shaft diameter
- **Compatible with all major servo motors**  
Support for different manufacturers mounting pattern and shaft shape  
\* Please contact a sales person for compatible servo motors.
- **2 models available: with or without output flange**  
Selectable in accordance with the customer's equipment
- **Pre-lubricated**  
Sealed and filled with optimal amount of oil (RV GREASE LB00), allowing for easy installation and set-up
- **Easy oil changing**  
Ports located on all faces

【With output flange】... Height : 158 mm



【Without output flange】... Height : 136 mm



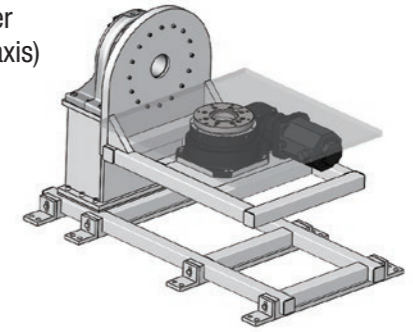
\* Quantities with quick delivery are limited. Please contact a sales person about stock status. Please take transportation period into account in regard to arrival date.  
After Nabtesco receives a purchase order, the products will be shipped out from our factory within 5 business days of Nabtesco. (Excluding order date). Please contact us for the delivery date before and after long holidays such as Golden week holidays, Japan Obon holidays, New Year's holidays.

## Application Examples

Index table



Positioner (Rotary axis)

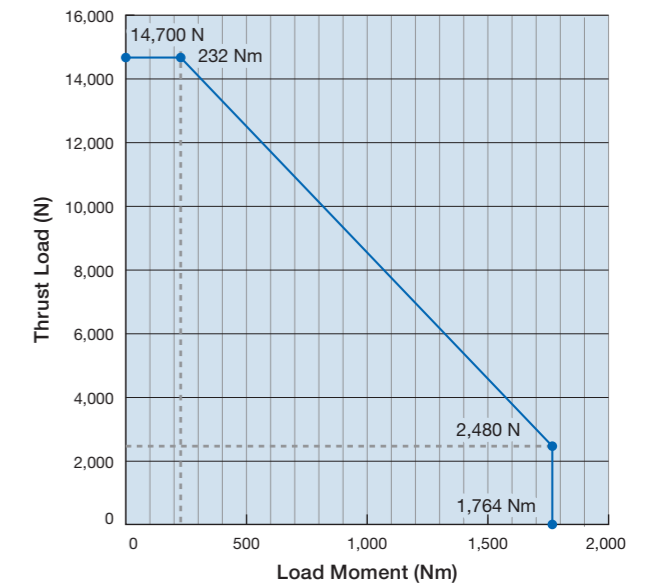


## Specification Table

Model	RS-50A
Maximum allowable load	1,500 kg
Hollow shaft diameter	φ50 mm
Rated torque	490 Nm
Allowable startup/stop torque	1,225 Nm
Momentary maximum allowable torque	2,450 Nm
Rated output speed	15 rpm
Allowable output speed*1	60 rpm
Allowable moment	1,764 Nm
Momentary maximum allowable moment	3,528 Nm
Positioning accuracy*3	60 arc.sec.
Repeatability (Reference value)	±5 arc.sec.
	Dia. 500 mm ±0.012 mm
Reduction ratio	65.4, 130.8*4, 163.5*4
Operation range (rotation)	Endless*2
Weight (Not including motor flange and input spline)	40 kg

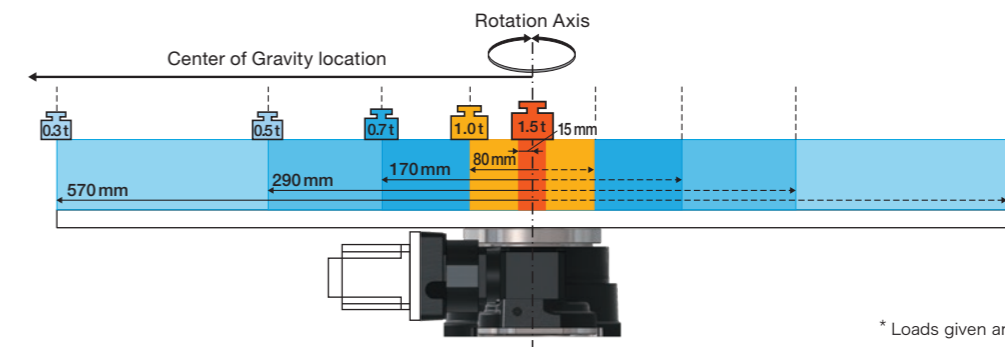
\*1 The allowable output speed may be limited by operating rate. Make sure the surface temperature of the reduction gear does not exceed 60°C during use.  
\*2 The operation range may be limited by the motor.  
\*3 The measurement system complies with JIS B 6192.  
\*4 Special order product. Please contact a sales person for delivery date.

## Allowable Moment Diagram



\*In an application subject to both a load force and a moment load at the same time, please make sure to use the product within the allowable moment range listed in the diagram above.

## Center of Gravity Height and Allowable Load



\* Loads given are reference values.